



Schneider Electric Easy UPS 1 Ph Online

For professionals in small to medium businesses, Easy UPS Online provides basic power protection for unstable power conditions, ensuring consistent and reliable connectivity at the most critical moments.

Schneider Electric Easy UPS Online is a versatile, high quality, cost competitive UPS developed to handle a wide voltage range, and inconsistent power conditions; delivering the quality millions of professionals trust around the world.



www.schneider-electric.com

Life Is On

Schneider
Electric

Schneider Electric Easy UPS Online Standard Features



High power factor

More real output power in watts 0.8 Pf (1, 3 kVA)

Input power factor correction

(0.95 under normal input and full load)
Minimizes installation costs by enabling the use of smaller generators and cabling

Generator compatible

Ensures clean, uninterrupted power to the loads in the event of an extended power outage

OVCD (Overvoltage Cutoff Device) protection

Under special application with high voltage condition, OVCD protection will prevent the damage of UPS components and extend the life of the UPS

Wide input voltage range

(Half load: 110-300VAC)
Allows for unstable power environments

Intelligent battery management

Maximizes battery performance, life, and reliability through intelligent precision temperature compensated charging

Built-in Automatic and Manual Bypass

Ensures seamless power to the load even in the event of catastrophic UPS failure

Power conditioning

Protects connected loads from surges, spikes, lightning, and other power disturbances

Flash upgradeable firmware

Allows for field updates of firmware via communication ports (USB or RS232)

LCD/LED Display

Intuitive interface provides detailed and accurate information with the ability to configure locally

Environmentally robust

Conformal coated

ECO mode / Green mode

An energy saving mode that allows the input voltage regulation range to be set and modified through the LCD display

Safety agency approved

Ensures the product has been tested and approved to work safely with the connected service provider equipment and within the specified environment

Excellent power quality and performance

True double conversion provides tight voltage and frequency regulation and zero transfer time for reactive loads such as machinery or lab equipment

Schneider Electric Easy UPS Online



LCD display

1. On/Off Status LED

Indicates power is on

2. On/Off Button

Press to power UPS on or off

3. Alert LED

Flashes red when UPS has a notification or is in a steady state when there is a fault

4. Mute/ESC button

Mutes current alarm temporarily and also serves as the escape key when navigating the sub menus of the display

5. Enter key

Press to enter the display menus and chose an option within the menu

6. Up/Down arrows

Keys for navigation through the display menu

LCD display icons



ON LINE

UPS is on utility power



ON BATT

UPS is on battery power



BYPASS

UPS is in bypass mode



ON BATT

Replace battery



ALARM

An internal fault is detected



Overload- connected load is drawing more than the power rating



Battery charge



Load level



Mute- audible alarm has been disabled



ECO mode – illuminated when the unit is providing utility power directly and power is within configured ranges



Alert or notification – UPS has detected and error please see user's manual for details

EVENT LOG

Event – illuminated when the user is reviewing the event log

Schneider Electric Easy UPS Online Related Accessories

Enable monitoring and control with an additional purchase

SNMP Card (APVS9601)

Schneider Electric SNMP Card provides direct communication with your Easy UPS.

At a glance the SNMP card monitors:

- UPS status: load, battery charge, voltage
- Battery status: healthy & capacity & runtime
- Environmental status: temperature & humidity
- Shutdown Wizard: ability to remotely shut down and reboot server

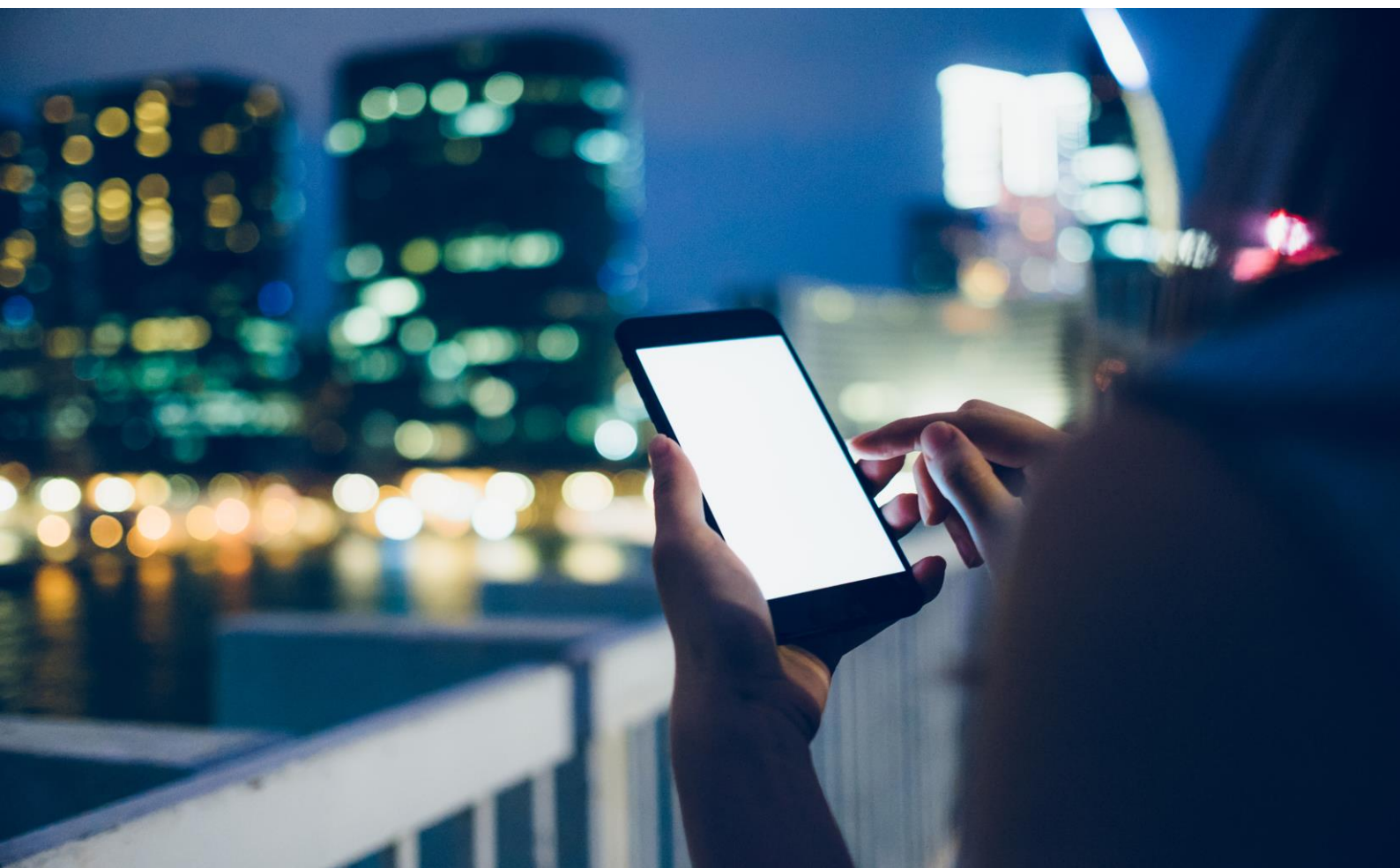


Dry Contact Card (VGLS9901I)

UPS management accessory that provides two dry contact input and one relay output interface to Schneider Electric Easy UPS SRV Series

Suitable with applications:

- IBM server, personal PC and workstations equipment
- Auto-controlled industrial equipment and communication applications



UPS Model	SRVS1KI-AZ	SRVS3KI-AZ
Output		
Power Capacity	800 W / 1000 VA	2400 W / 3000 VA
Nominal Output Voltage	220/230/240 VAC	
Output Frequency Range (sync mode)	47-53 Hz or 57-63 Hz	
Topology and output waveform	Double conversion online; sine wave	
Output Connections	Australian	Australian
Input		
Nominal Input Voltage	220/230/240 VAC	
Input Frequency	40 - 70 Hz	
Input Voltage Range	110-300 at 60% load	
Input Connection	Australian	Australian
Batteries		
Battery Type	12 V / 9 AH X 2	12 V / 9 AH X6
Typical recharge time	4 hours to recover to 90% capacity	
Runtime Estimates at full and half load, min	400W / 800 W	1200W / 2400 W
Half Load Runtime (min)	10	10
Full Load Runtime (min)	4	4
Communication and management		
DB-9 RS-232	Supports Windows 2000/2003/XP/Vista/2008/7/8, Linux, Unix, and MAC	
Intelligent Slot	Mini slot	
Control panel and audible alarms	Multi-function LCD status and control console	
Emergency power off (EPO)	No	
Surge Protection and Filtering		
Surge Energy Rating (Joules)	600 J	
Physical		
Dimension DxWxH(mm)	288 x 145 x 223	425 x 190 x 336
Weight (kgs)	9.3	26.8
Conformance		
Regulatory	CE	
Warranty	2 years	

Life Is On

Schneider
Electric

Schneider Electric Easy UPS Online

Schneider Electric
132 Fairgrounds Road
West Kingston, RI 02892
Phone: 401-789-5735



©2017 Schneider Electric. All Rights Reserved. Schneider Electric | Life Is On, APC, Back-UPS, and PowerChute are trademarks and the property of Schneider Electric SE, its subsidiaries, and affiliated companies. All other trademarks are the property of the respective owners.

Life Is On

